

ASHTON PLACE

ashtonapp@cmc-nc.com



ABOUT

Ashton Place provides 51 affordable units serving seniors (55+) at or below 60% of the area median income (AMI) with a mix of efficiency, one, and two-bedroom apartments. Located in the heart of downtown Durham and adjacent to the Durham Station, Ashton Place will provide our residents with a high quality living experience with easy access to all that Durham has to offer.

FEATURED AMENITIES

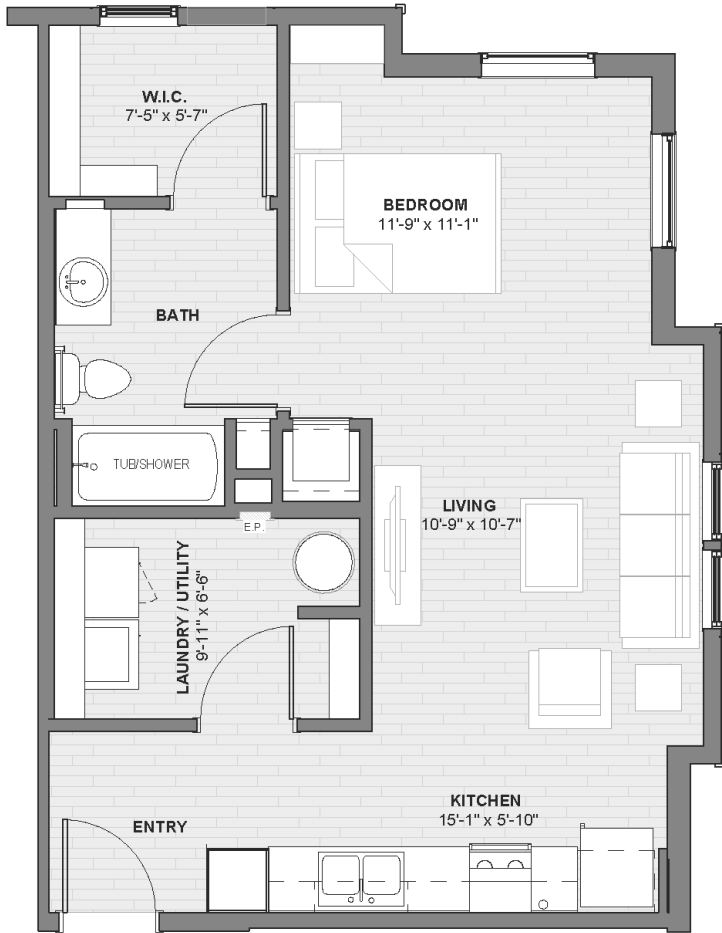
Ashton Place will have on-site property management staff, tenant storage areas, indoor/outdoor sitting areas, a fitness facility, complimentary WiFi for all residents, a community gathering room with kitchen, a computer center, & limited parking provided in an adjacent parking deck.

SEE REVERSE SIDE FOR SAMPLE FLOOR PLANS

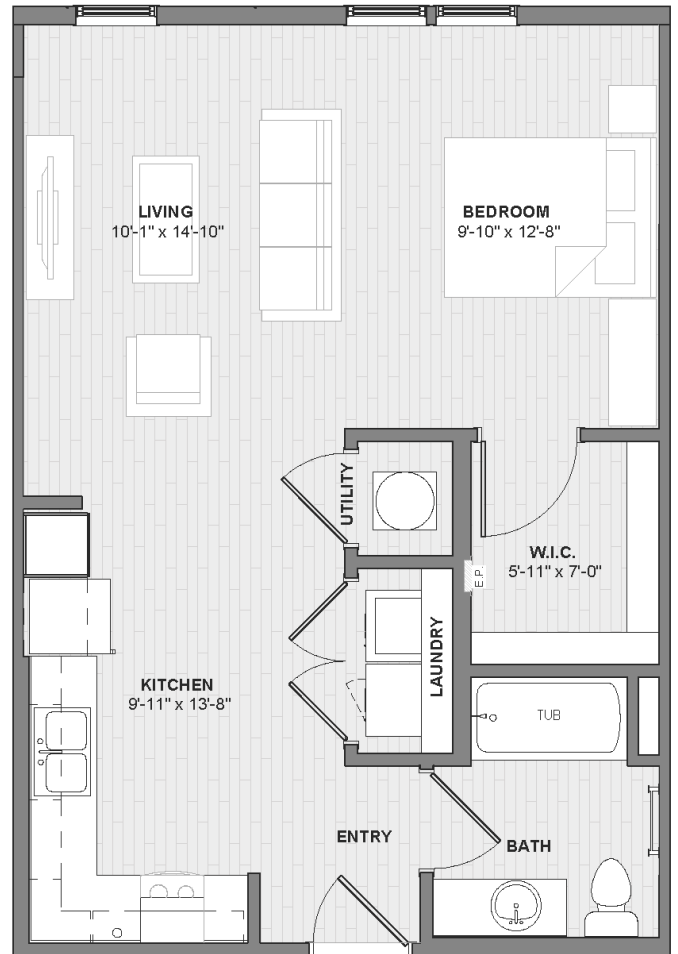


ASHTON PLACE

Sample Floorplans—Studio



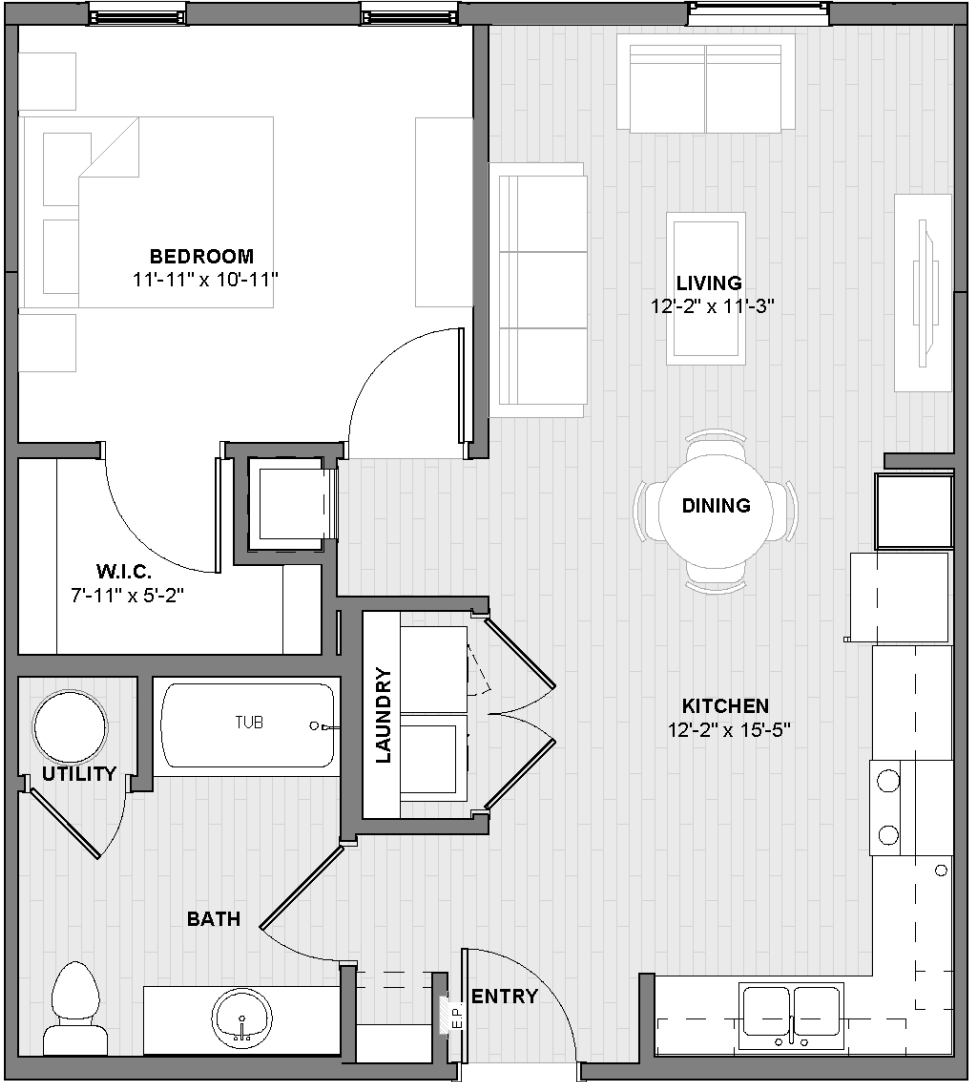
UNIT S2



UNIT S1

ASHTON PLACE

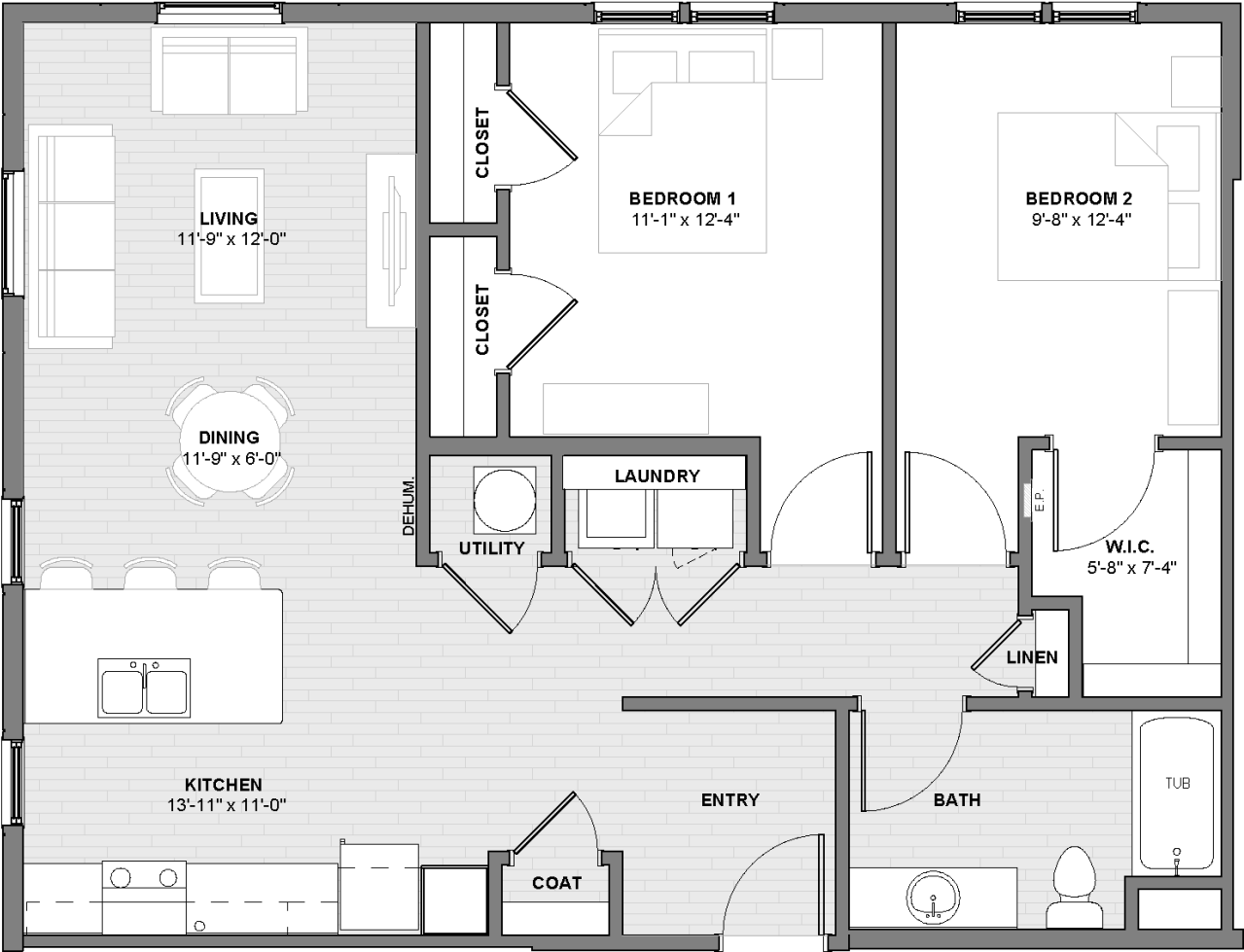
Sample Floorplan-1 Bedroom



UNIT A1

ASHTON PLACE

Sample Floorplan-2 Bedroom



UNIT B1