

- NOTES:
1. AREAS BY COORDINATE GEOMETRY UNLESS SHOWN OTHERWISE.
  2. ALL DISTANCES ARE HORIZONTAL GROUND DISTANCES.
  3. ALL STREETS ARE PUBLIC RIGHTS-OF-WAY UNLESS SHOWN OTHERWISE.
  4. ALL PROPERTY CORNERS ARE CALCULATED POINTS UNLESS SHOWN OTHERWISE.
  5. NO MONUMENT WITHIN 2,000 FEET OF PROPERTY.
  6. NO FEMA FLOOD HAZARD AREAS PER FIRM NUMBER 3705174001 DATED MAY 2, 2006.
  7. PROPERTY IS ZONED R-20.
  8. THE COORDINATES SHOWN ON THIS PLAN WERE DERIVED BY GPS (VIRTUAL REFERENCE STATION) GPS USING DUAL FREQUENCY RECEIVER, THIS METHOD RESULTS IN (NAD 1983/2011) - (COORDS 96) POSITIONS AND NAVD 88 (MSL) ELEVATIONS USING THE CONTINUOUSLY OPERATING STATIONS MAINTAINED BY NORTH CAROLINA GEODETIC SURVEY.

NOTE:  
THE LOCATIONS OF UNDERGROUND UTILITIES AS SHOWN HEREON ARE BASED ON OBSERVED ABOVE GROUND STRUCTURES, FIELD MARKINGS AND DRAWINGS PROVIDED TO THE SURVEYOR. LOCATIONS OF UNDERGROUND UTILITIES/STRUCTURES MAY VARY FROM LOCATIONS SHOWN HEREON. ADDITIONAL BURIED UTILITIES/STRUCTURES MAY BE ENCOUNTERED. NO EXCAVATIONS WERE MADE DURING THE PROGRESS OF THIS SURVEY TO LOCATE BURIED UTILITIES/STRUCTURES. BEFORE EXCAVATIONS ARE BEGUN, FIELD LOCATIONS AND THE TYPE OF UTILITIES/STRUCTURES SHOULD BE VERIFIED.

LINE	DIRECTION	DISTANCE
L1	N86°22'00"W	24.58
L2	N00°23'00"E	97.38
L3	N72°22'00"E	25.03
L4	N86°22'00"W	24.96

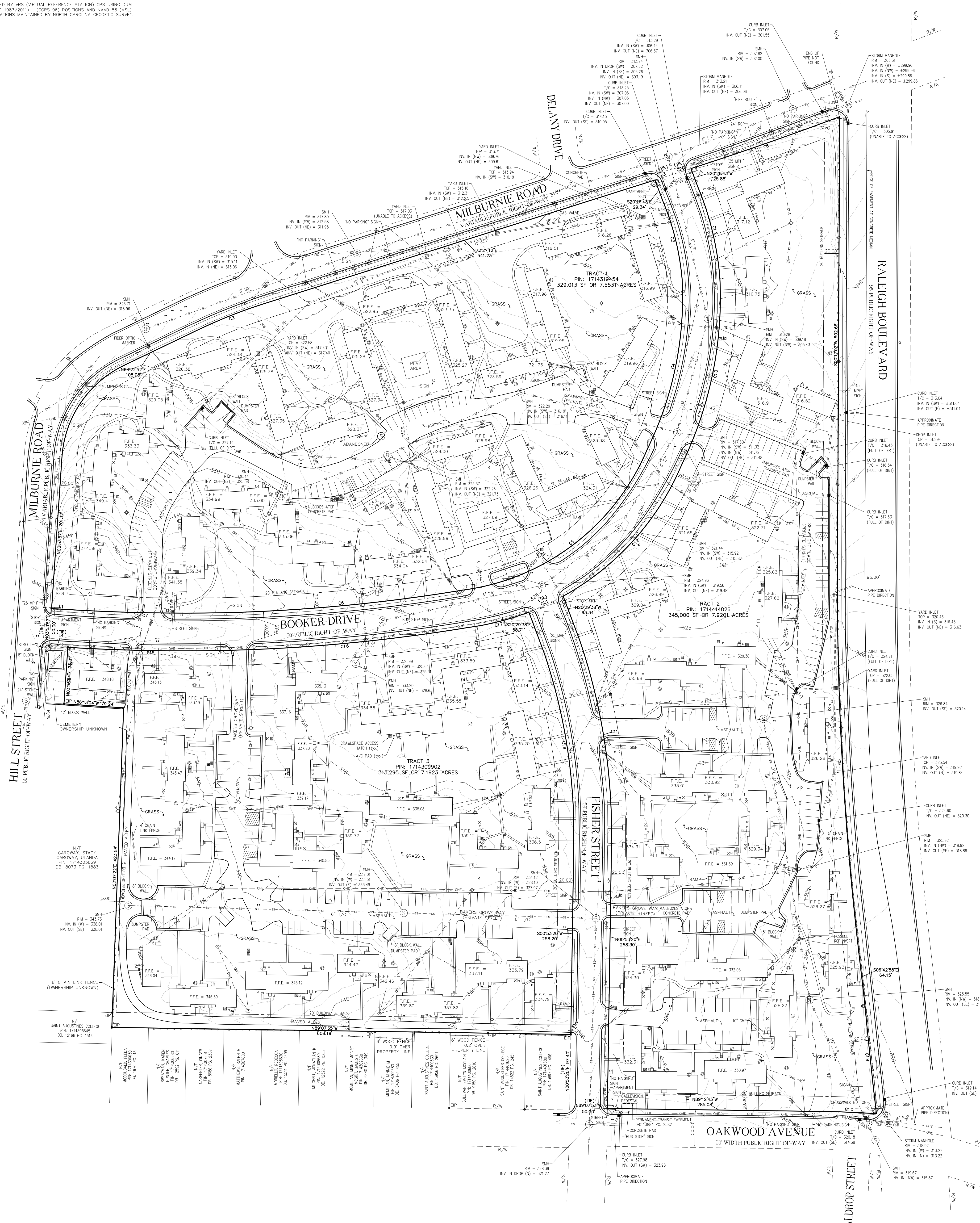
CURVE	RADIUS	LENGTH	CHORD	DIRECTION	CHORD
C1	145.71	115.80	144.93	N44°59'24"	146.83
C2	686.50	96.69	188.70	N87°20'32"	96.61
C3	344.01	107.68	313.35	N13°35'56"	107.75
C4	453.92	231.47	311.32	S11°29'50"	228.97
C5	308.33	324.09	562.40	S62°40'36"	329.36
C6	2273.20	320.44	384.19	S84°19'00"	320.18
C7	2608.00	200.25	188.90	N88°49'44"	200.20
C8	4410.86	208.63	1074.92	N70°44'22"	208.63
C9	4137.98	505.49	503.12	S61°24'58"	505.18
C10	11281.80	174.43	181.78	N87°58'56"	174.42
C11	793.64	268.20	189.01	S67°58'36"	266.93
C12	358.17	339.48	141.92	N17°58'56"	235.06
C13	803.82	286.25	141.92	N17°58'56"	235.06
C14	384.97	122.94	113.44	N13°44'44"	122.44
C15	2608.00	204.29	388.94	S84°19'00"	238.84
C16	2323.20	326.71	184.50	N84°50'31"	326.44
C17	3358.33	84.31	167.33	N13°35'56"	84.11
C18	6693.63	150.65	156.00	S66°02'29"	150.63
C19	143.84	250.44	369.00	N13°35'56"	249.26
C20	4410.86	25.03	174.26	N72°22'00"	25.03
C21	358.73	50.10	183.02	N63°02'00"	50.15

NC GRID (NAD 83/2011)  
SCALE: 1" = 60'

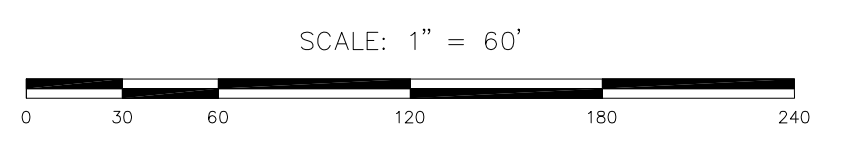
REFERENCES  
BM 1949 PG. 71  
BM 1974 PG. 34  
DB 15568 PG. 1

©2003 Bass, Nixon & Kennedy, Inc. expressly reserves the common law copyright and other property rights in these plans. These plans are not to be reproduced, changed or copied in any form or manner whatsoever, nor are they to be assigned to any third party without first obtaining the expressed written permission and consent of Bass, Nixon & Kennedy, Inc.

LEGEND	
•	CALCULATED POINT
◻	FIBER OPTIC MARKER
◻	SIGN
⊠	WATER VAULT
⊠	HOT BOX
⊠	ELECTRIC POLE
⊠	SANITARY SEWER CLEANOUT
⊠	FIRE HYDRANT
⊠	GLY WIRE
⊠	WATER METER
⊠	WATER VALVE
⊠	LIGHT POLE
⊠	TRAFFIC SIGNAL BOX
⊠	TRAFFIC SIGNAL POLE
⊠	CURB INLET
⊠	YARD INLET
⊠	EP = EXISTING IRON PIPE
⊠	SMH = SANITARY SEWER MANHOLE
⊠	JUNCTION BOX
⊠	CABLEVISION PEDESTAL
⊠	WATER MANHOLE
⊠	STORM MANHOLE
⊠	ELECTRIC METER
⊠	GAS METER
⊠	GAS VALVE
⊠	CRAWLSPACE ACCESS HATCH
⊠	A/C PAD
⊠	ROP = REINFORCED CONCRETE PIPE
⊠	COP = CORRUGATED PLASTIC PIPE
⊠	R/W = RIGHT-OF-WAY
⊠	P.O.B. = POINT OF BEGINNING
⊠	T/C = TERRA COTTA
⊠	DIP = DUCTILE IRON PIPE
⊠	XXXX DENOTES ADDRESS
⊠	STORM DRAIN LINE
⊠	SANITARY SEWER LINE
⊠	OVERHEAD ELECTRIC



OWNER:  
COLLEGE PARK COLLABORATIVE LLC  
DHIC INC  
113 S WILMINGTON ST  
RALEIGH NC 27601-1443



**BASS, NIXON & KENNEDY, INC.**  
CONSULTING ENGINEERS  
550 W. HAZELWOOD HILL ROAD, SUITE 100, RALEIGH, NORTH CAROLINA 27607  
TELEPHONE: (919) 851-4422 or (603) 945-1879  
FAX: (919) 851-8868  
CERTIFICATION NUMBERS: NCEBS (C-0110); NCELA (C-0867)

**TOPOGRAPHIC SURVEY OF WASHINGTON TERRACE APARTMENTS**

13308 02-10-15 DHG  
JOB NO. DATE DRAWN BY  
13308 02-10-15 DHG  
JOB NO. DATE DRAWN BY

13308 02-10-15 DHG  
JOB NO. DATE DRAWN BY  
13308 02-10-15 DHG  
JOB NO. DATE DRAWN BY

13308 02-10-15 DHG  
JOB NO. DATE DRAWN BY  
13308 02-10-15 DHG  
JOB NO. DATE DRAWN BY

13308 02-10-15 DHG  
JOB NO. DATE DRAWN BY  
13308 02-10-15 DHG  
JOB NO. DATE DRAWN BY

13308 02-10-15 DHG  
JOB NO. DATE DRAWN BY  
13308 02-10-15 DHG  
JOB NO. DATE DRAWN BY

13308 02-10-15 DHG  
JOB NO. DATE DRAWN BY  
13308 02-10-15 DHG  
JOB NO. DATE DRAWN BY

13308 02-10-15 DHG  
JOB NO. DATE DRAWN BY  
13308 02-10-15 DHG  
JOB NO. DATE DRAWN BY

13308 02-10-15 DHG  
JOB NO. DATE DRAWN BY  
13308 02-10-15 DHG  
JOB NO. DATE DRAWN BY

13308 02-10-15 DHG  
JOB NO. DATE DRAWN BY  
13308 02-10-15 DHG  
JOB NO. DATE DRAWN BY

13308 02-10-15 DHG  
JOB NO. DATE DRAWN BY  
13308 02-10-15 DHG  
JOB NO. DATE DRAWN BY

13308 02-10-15 DHG  
JOB NO. DATE DRAWN BY  
13308 02-10-15 DHG  
JOB NO. DATE DRAWN BY